

Configuring Photoshop Version 7 and CS For ATI OKI Sublimation Toner

Figure 1

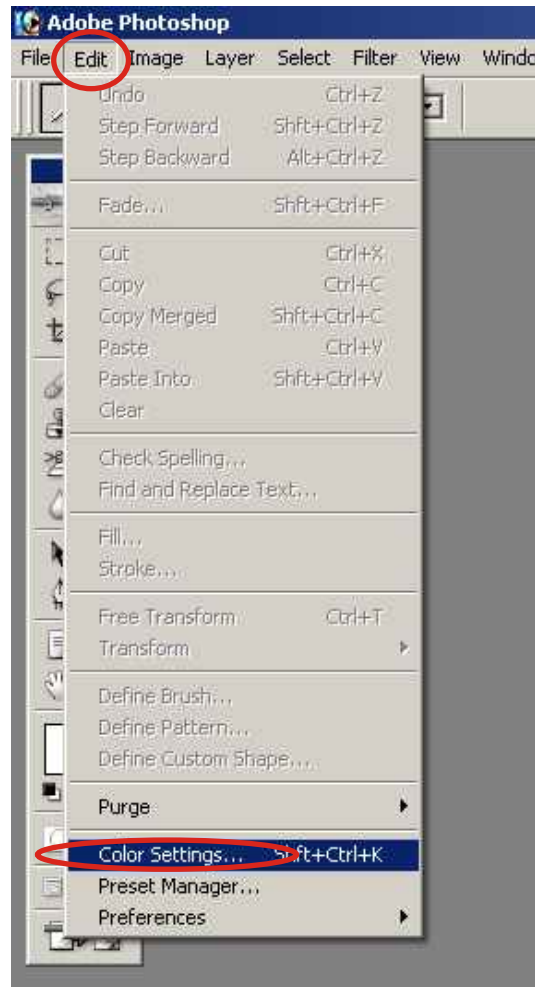
1. Configure your color settings.

Make sure you have installed your sublimation toner and installed your ATI OKI sublimation toner profile before printing!

Please refer to the available guides for instruction.

Select **Edit** from the top pulldown menu then **Color Settings ...**

Reference Figure 1 on the right.



2. In the Settings selection choose Custom.

Make sure the **Advanced Mode** has a check in the box!

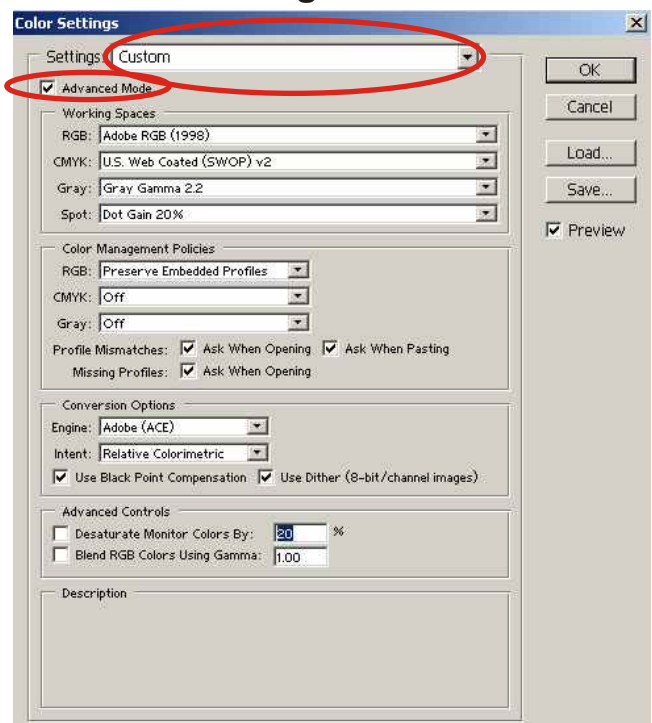
Set **ALL** the settings in each selection to match.

Reference Figure 2 on the right.

Note: Later when you import photos without profiles attached it is recommended to choose Adobe RGB working space for best results.

These color settings are retained every time you open Photoshop unless you change them. If you alter these settings for another project not using sublimation toner you will need to change these settings back.

Figure 2



3. OPTIONAL

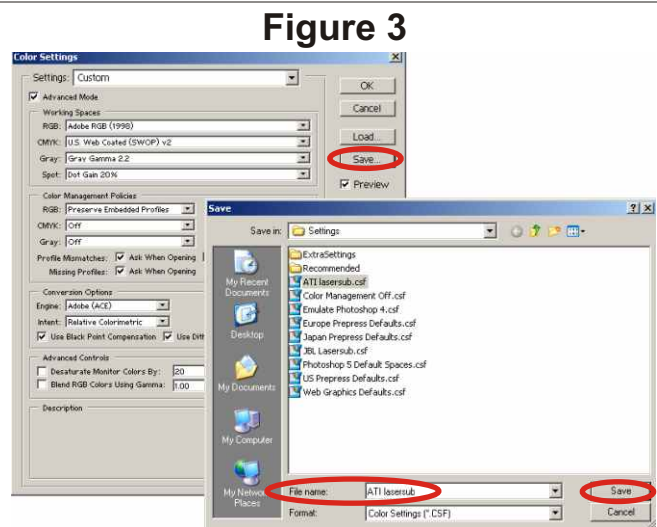
For your convenience you may save these color settings to a new name.

Click on the **Save** button. A file window will open.

Enter a new file name in the **File Name** section.
For example, **ATI Lasersub**

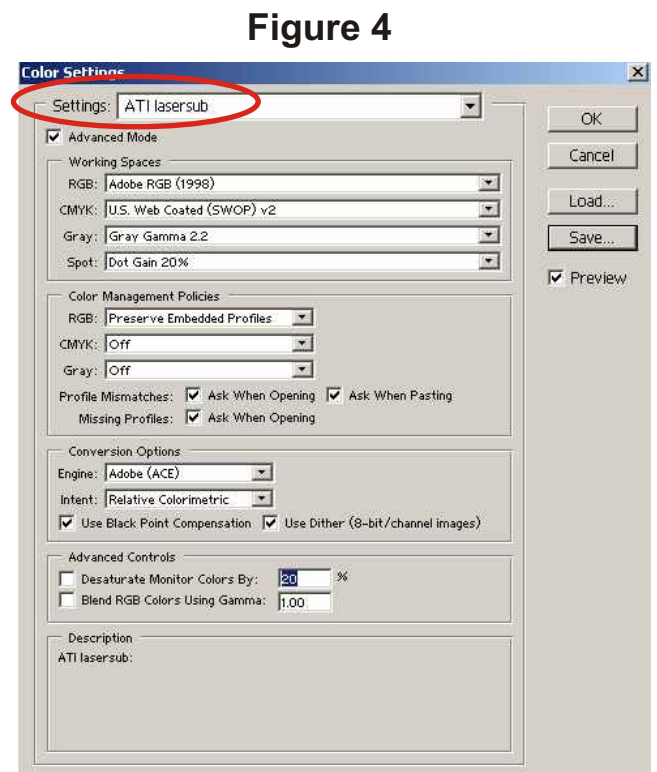
Click Save in the file window.

Reference Figure 3 on the right



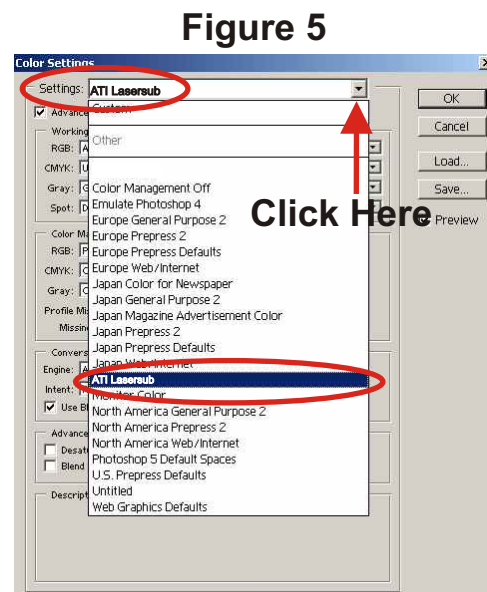
Your new settings are now associated with the new name saved and are showing in the settings box.

Reference Figure 4 on the right.



To recall these settings later you may now click in the control next to the **Settings** selection and scroll to find your save color settings.

Reference Figure 5 on the right.



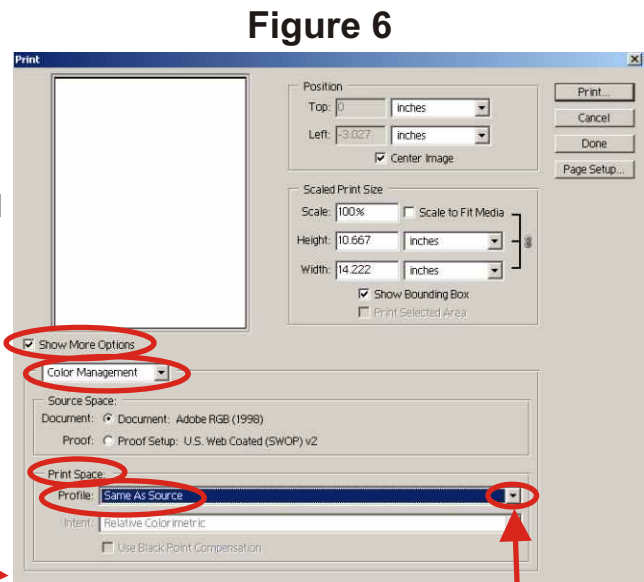
4. Printer settings.

After you have prepared your document and ready to print you will need to specify your profile and printer options. It is assumed that you have selected the OKI printer used for sublimation in **Page Setup**.

Make sure that you have selected in the **Print Preview** window **Show More Options** and selected **Color Management** underneath.

In the **Print Space** section click the control next to the current **Profile** selection to change your profile.

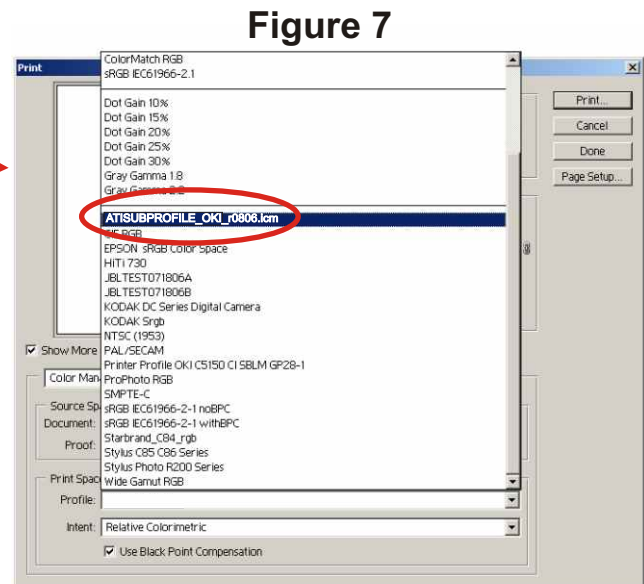
Reference Figure 6 on the right.



Click here to change profile

Scroll through the list and select **ATISUBPROFILE_OKI_r0806.icm**.

Reference Figure 7 on the right.



5. Ready to print.

Make sure **ATISUBPROFILE_OKI_r0806.icm** is displayed in the **Profile** selection in the **Print Space** section.

Select your desired **Intent** Setting, **Relative Colorimetric** is recommended.

Select **Print!**

Reference Figure 8 on the right.

Note: These color settings are retained every time you open Photoshop unless you change them. If you alter these settings for another printer or project not using sublimation toner you will need to change these settings back.

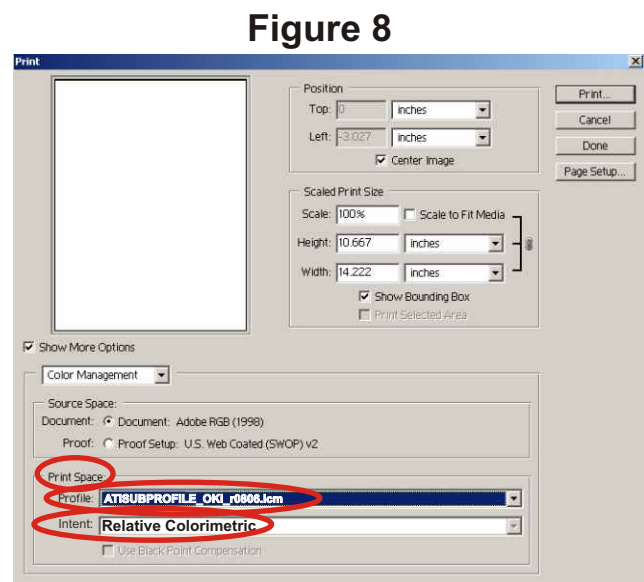


Figure 8